

wacom®

Cintiq Pro Engine

- **Transform your Cintiq Pro 24/32 into a powerful creative pen computer by adding a Wacom Cintiq Pro Engine**
- The modular creative PC attaches to back of your Cintiq Pro, eliminating tangled cables and conserving desktop space.
- Available in two powerful, VR capable* configurations, the Cintiq Pro Engine features high-power Intel processors, NVIDIA graphics and the ports you need to attach your VR headsets and controllers.

**Some VR headset systems may require additional equipment, including a USB-C to USB3.0 hub and HDMI to mini-HDMI adapter, when connected to the Wacom Cintiq Pro Engine.*



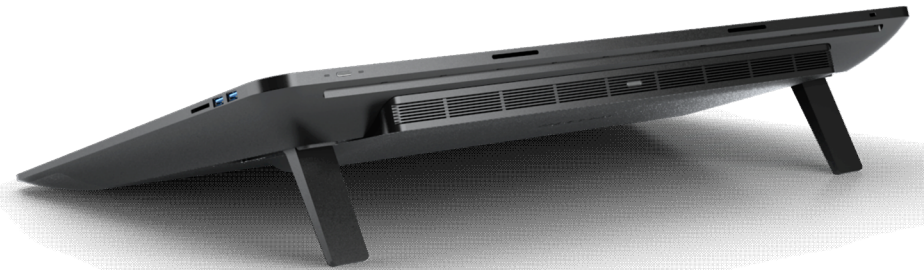
Turn your pen display into a powerful pen computer

- Wacom Cintiq Pro Engine is designed for the computing needs of creative professionals from 2D illustration and design to 3D modelling, CAD, and VR
- Flexible and powerful all-in-one form factor.
- Workstation class performance.
- VR capable* with the graphic processing power to run VR equipment.
- Beautifully integrated design with no messy cables.
- Multiple stand and arm options.
- User upgradeable SSD and memory (depending on model).

**Some VR headset systems may require additional equipment, including a USB-C to USB3.0 hub and HDMI to mini-HDMI adapter, when connected to the Wacom Cintiq Pro Engine.*



Wacom Cintiq Pro



Wacom Cintiq Pro + Wacom Cintiq Pro Engine