



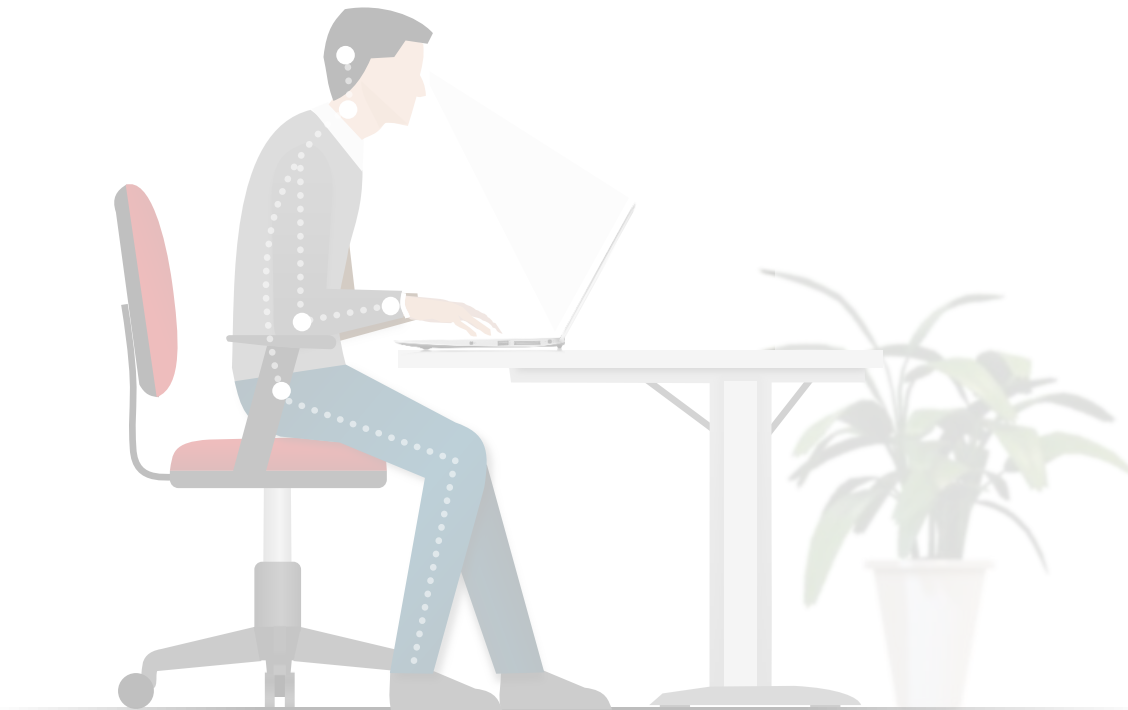
# Workplace Analysis

A guide to define the right workplace setup

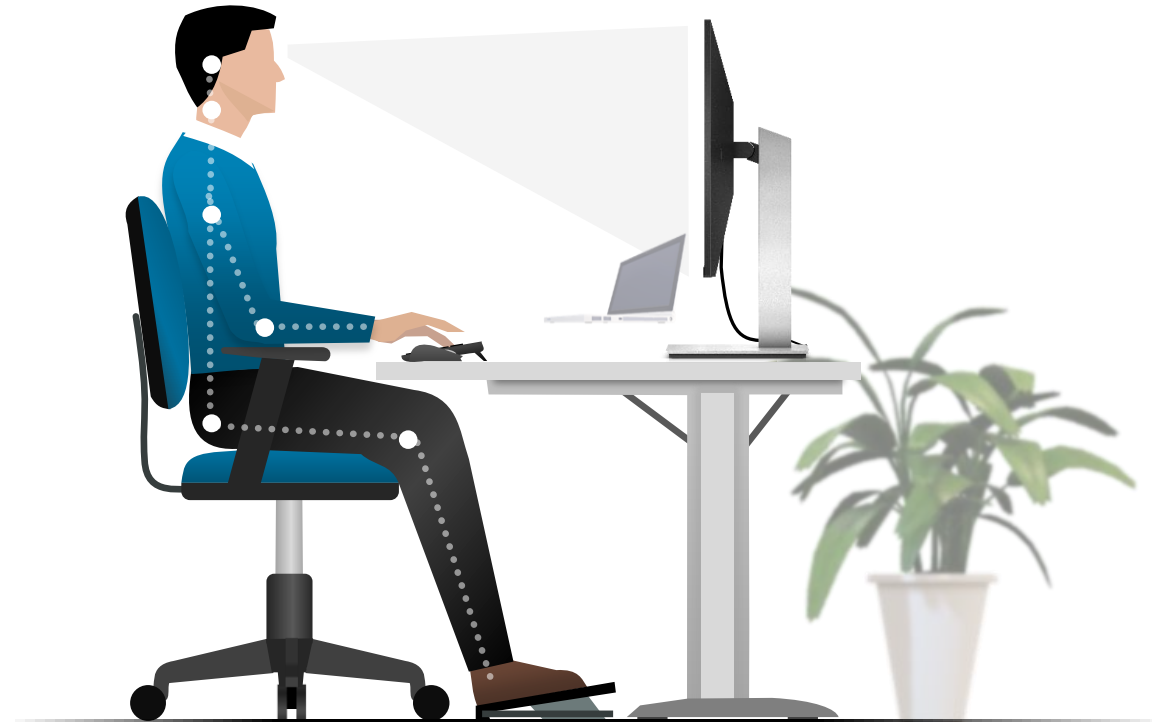
April 2022

# The Importance of Workplace Solutions

To ensure the best user comfort, ergonomics and productivity, it is recommended that each user has a workplace setup that includes external display(s), mouse and keyboard



Wrong setup, back posture, notebook screen too small for longer work periods



Correct setup, with the right back posture and larger external screen ideal for normal workdays

# The ideal Workplace Solution

## Elements

Integrated and height adjustable Webcam for Video Conferencing capability with Privacy function

IR Camera for strong security and Windows Hello Authentication

External Display for higher productivity (Single, Dual or Curved Display options)

**USB-C 3.2 Gen 2**  
for compatibility with all modern devices and single cable connectivity

Integrated **RJ45 with in Band** Manageability with MAPT, PXE Boot and WoL support

Front Firing Speakers

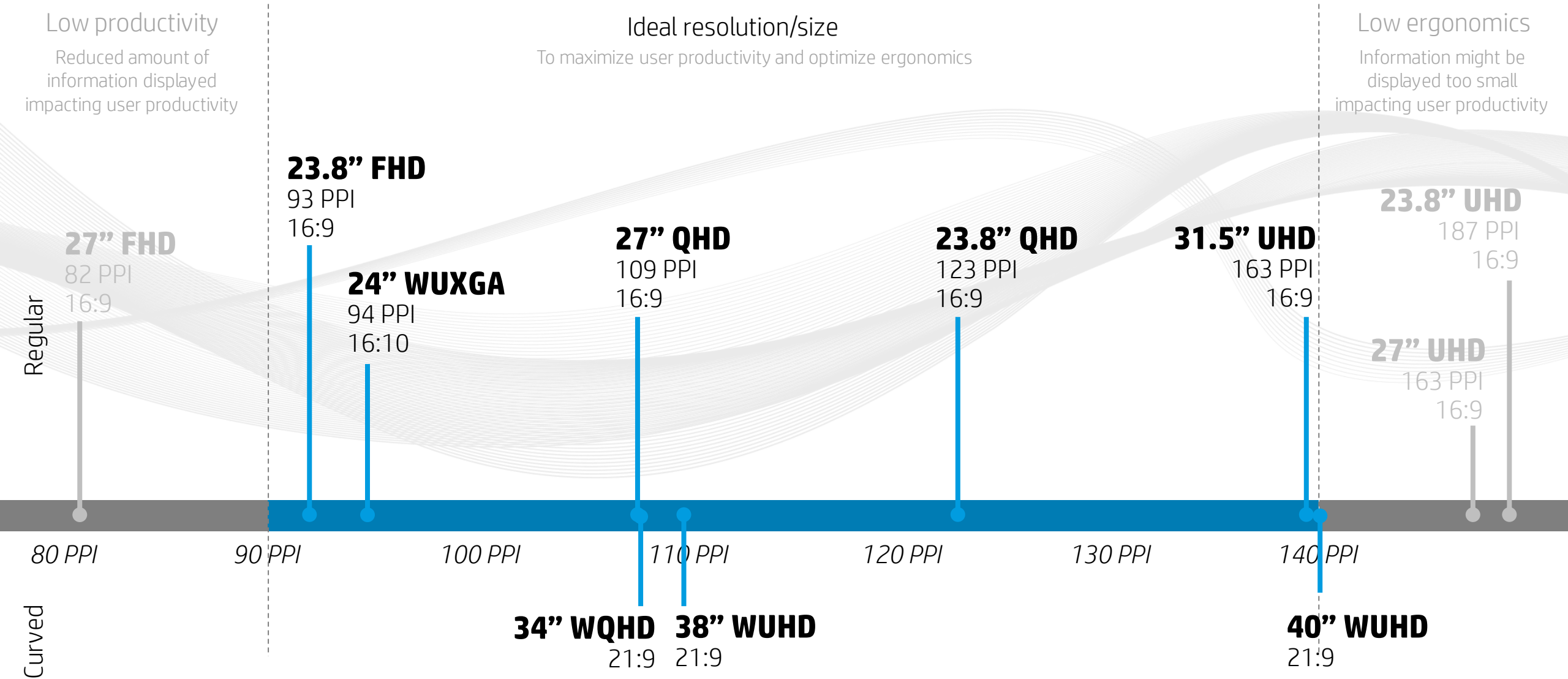
External wireless keyboard and mouse for higher productivity





# The correct Resolution Workplace Solution

Size/resolution combinations

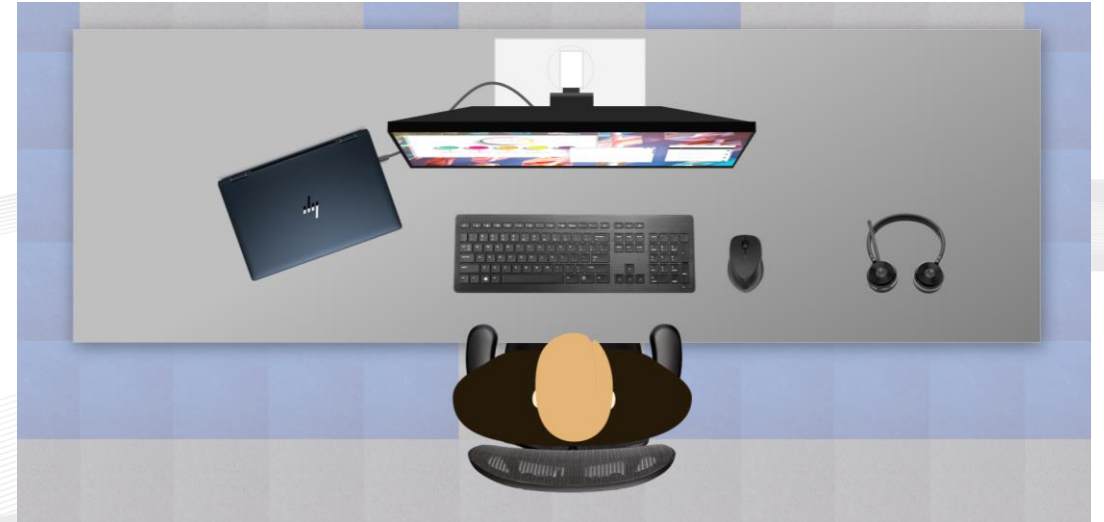


# Displays vs Docking Displays Workplace Solution Comparison



## Regular Display + Docking Station

- It allows to use older Displays adding flexibility and allowing extending Displays lifecycle
- More clutter. It requires a Dock, Display, 2x the number of cables and more devices to manage and maintain
- Using older Displays, power consumption is usually higher power versus Displays with the latest technology



## Docking Display

- Full flexibility as it allows to connect to additional displays for dual display setup
- Full Integration with Webcam, IR Camera, Microphones, Speakers, all integrated and no cables required
- Clean workplace, with less cables and high compatibility with all USB-C capable devices
- Docking Display costs closer to Display + Dock costs

# Single vs Dual Display Workplace Solution

## Comparison



**Single Display**

- Lower cost. Because of size and mainstream technologies, there is a cost advantage
- Lower Productivity. Due to display size limitation, less information displayed, and users tend to change windows quite frequently reducing productivity up to 38%

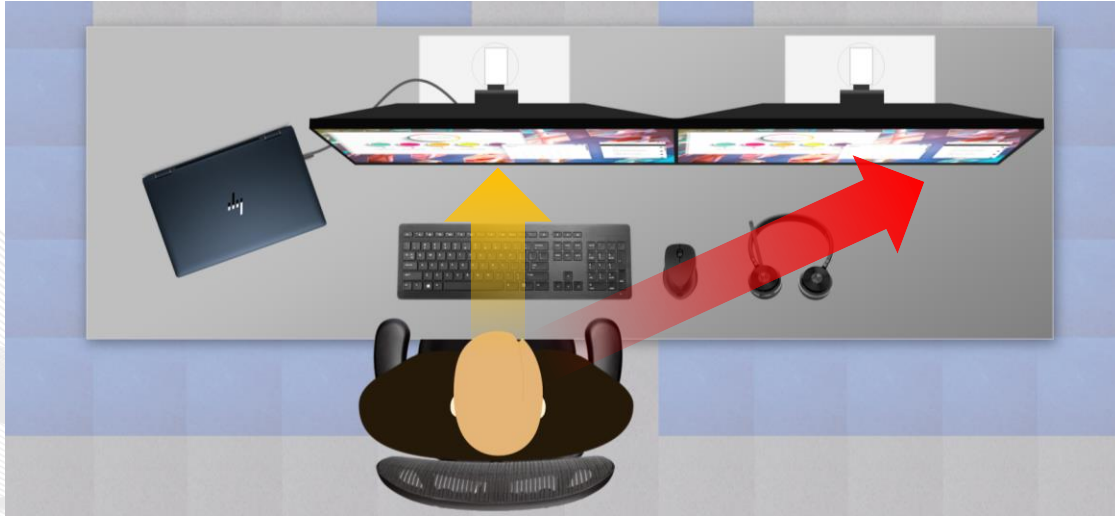


**Dual Display**

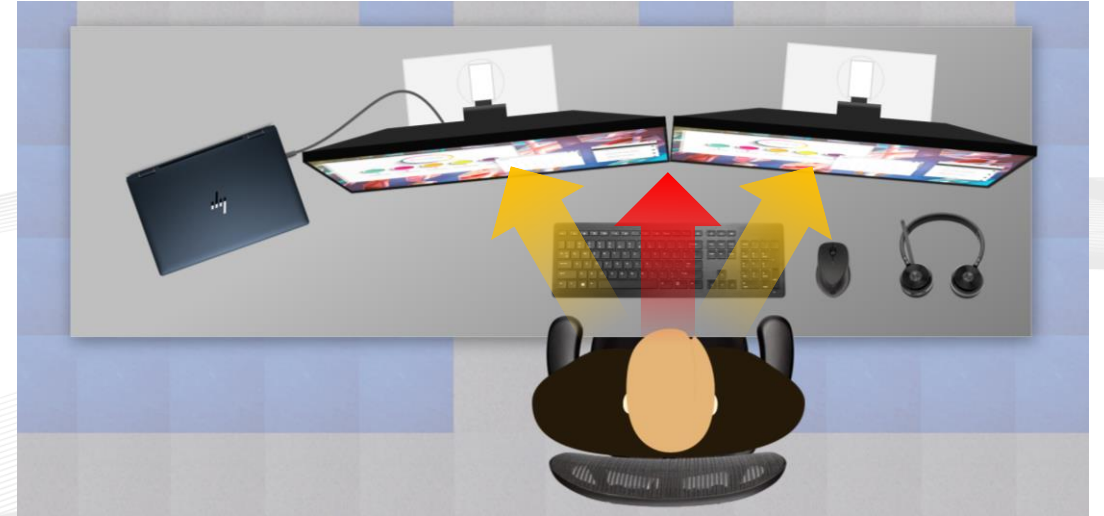
- More Productivity. Users can read information on one Display and create content on the second display
- More flexibility. Not all jobs require dual displays, and companies can add/remove the second display anytime
- Space required. Depending on the size, larger desks required
- Depending on the display size, some areas might be too far or the display frame might be in front of the user

# Dual Display Workplace Solution

## User Experience



Users tend to sit in front of one of the Displays meaning that there is a display always further away from the user (red arrow). The results in different focal lengths between eyes and the several points in the displays which might result in user fatigue

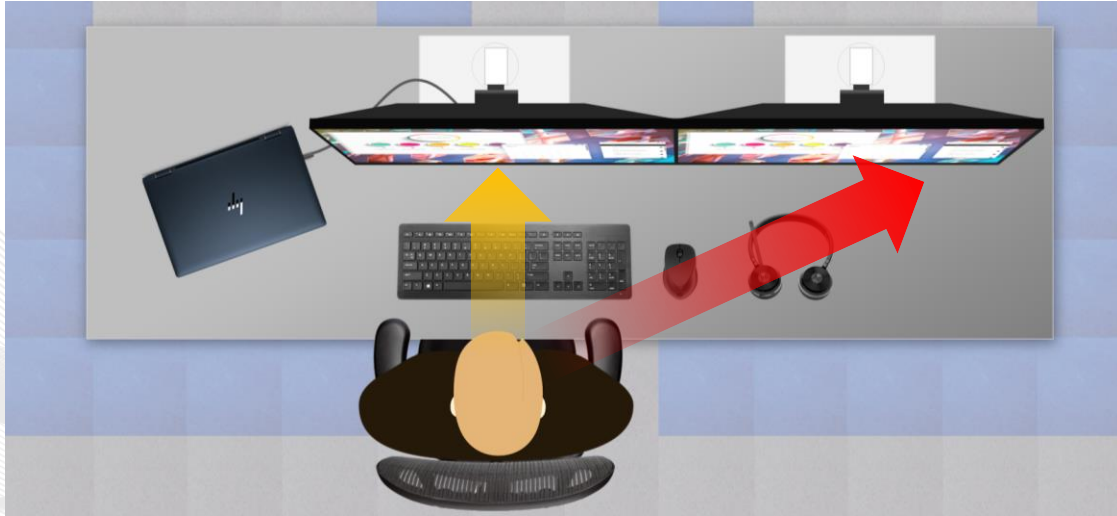


By Tilting Displays at an angle, the issue on the left side can be minimized but user ends is in front of the Display frame which (highlighted in red), even with thin bezels, it is not the ideal user experience



# Dual Display Workplace Solution

## User Experience



**Dual Display**

- More flexibility. Not all jobs require dual displays, and companies can add/remove the second display anytime
- More cables, 2 display stands, more elements to deploy and maintain
- Space required. Depending on the size, larger desks required
- Depending on the display size, some areas might be too far or the display frame might be in front of the user



**Curved Display**

- Higher user comfort with all points of the display at the same distance from the user's eyes
- With 21:9 Wide Display, it requires less space than 2 independent displays
- Simpler deployment, less cables, 1 single display stand
- Does have the exact same area as 2x 16:9 displays and shows up to 70% of the area of 2 displays



# Dual Docking Display Workplace Solution

Universal and Standard Workplace, simple to deploy and clutter free

5MP Pop Up Camera with IR Camera  
and Dual Array Microphones

**23.8"** FHD 16:9, **27"** QHD 16:9

**Docking Display 23.8"** FHD 16:9, **27"** QHD 16:9

**RJ45 Ethernet in Band Manageability**  
with MAPT, PXE Boot and WoL support

**USB-C 3.2 Gen 2**  
up to 65W Power Delivery

DisplayPort out Daisy Chain

Front Firing Speakers

Premium Wireless  
keyboard and Mouse

# Curved Docking Display Workplace Solution

Universal and Standard Workplace, simple to deploy and clutter free

5MP Pop Up Camera with IR Camera  
and Dual Array Microphones

34" WQHD 21:9    40" W5K 21:9

**RJ45 Ethernet in Band**  
Manageability with MAPT, PXE  
Boot and WoL support

**USB-C 3.2 Gen 2**  
up to 65W Power Delivery

Front Firing Speakers

Wireless keyboard  
and Mouse







**Thank  
You**